



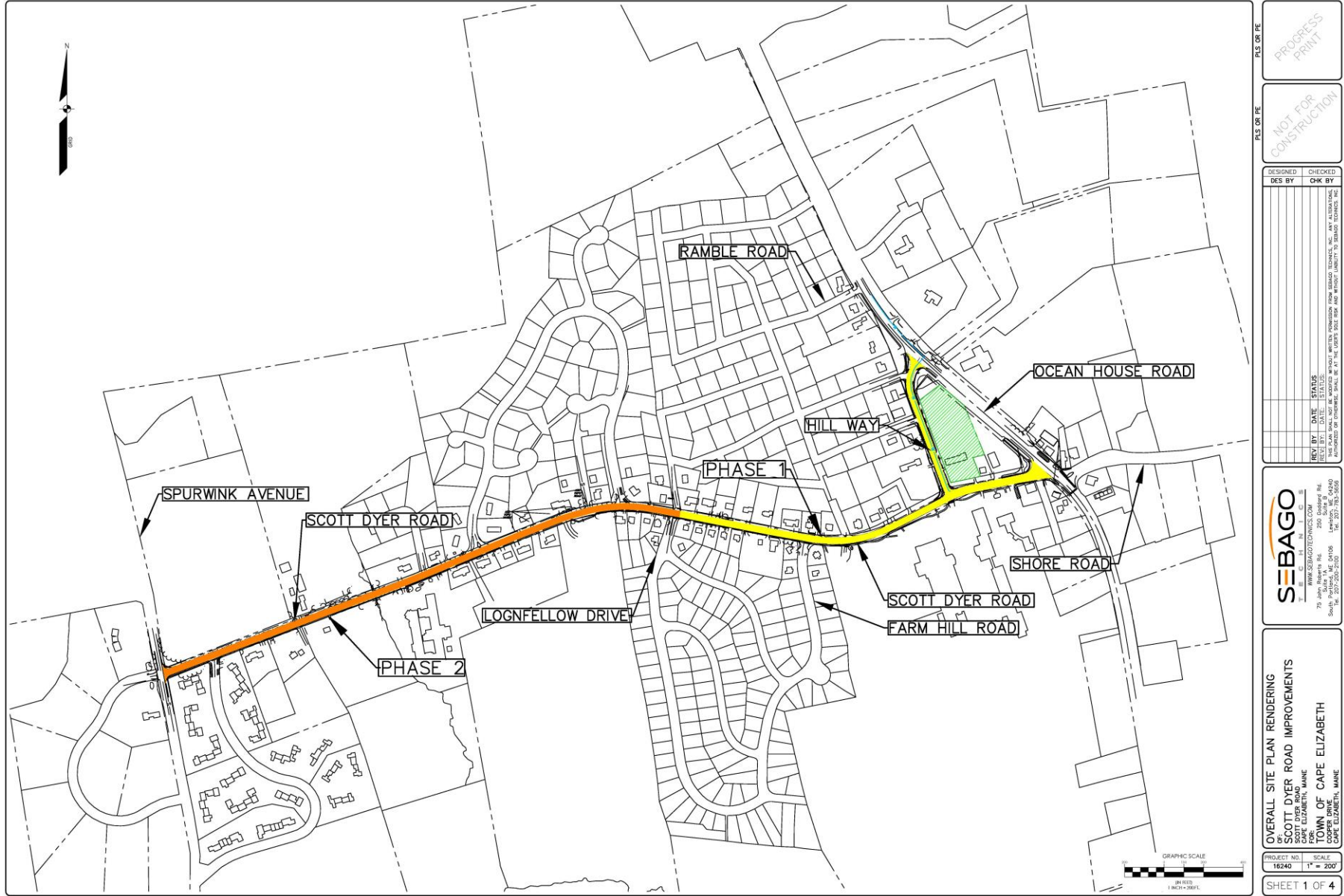
# Hill Way and Scott Dyer Road Improvements

Town of Cape Elizabeth, Maine



# Project Goals

- Evaluate Ocean House Road intersections for vehicular and pedestrian actions
- Provide safer and more accessible pedestrian and bicycle usage
- Partner with the Portland Water District & private development under construction to improve infrastructure in Hill Way
- Shift Hill Way and its sidewalks to be within the right of way limits
- Improve underground utilities along Scott Dyer to remove problematic conditions
- Coordinate with PACTS & MDOT to implement previously approved surface restoration project for the Scott Dyer Rd



PLS OR PE

PROGRESS PRINT

DESIGNED BY: [ ]

CHECKED BY: [ ]

DES BY: [ ]

CHK BY: [ ]

REV BY: [ ]

DATE: [ ]

STATUS: [ ]

THIS PLAN SHALL NOT BE MODIFIED WITHOUT PERMISSION FROM SEBAGO TECHNICS, INC. ANY ALTERATIONS SHALL BE INDICATED BY A RED LINE OR A RED CIRCLE WITH A RED "X" IN THE CENTER. THE USER SHALL BE RESPONSIBLE FOR OBTAINING ALL NECESSARY PERMITS AND APPROVALS FROM THE APPROPRIATE AGENCIES.

SEBAGO TECHNICS

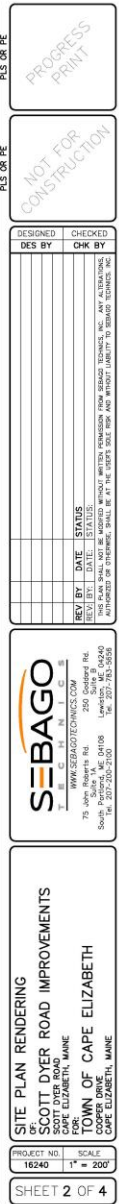
79 JERRY RAEV'S RD.  
SOUTH PORTLAND, ME 04106  
TEL: 207-255-2500  
WWW.SEAGOTECHNICS.COM

OVERALL SITE PLAN RENDERING  
SCOTT DYER ROAD IMPROVEMENTS  
CAPE ELIZABETH, MAINE  
TOWN OF CAPE ELIZABETH  
COOPER DRIVE, MAINE

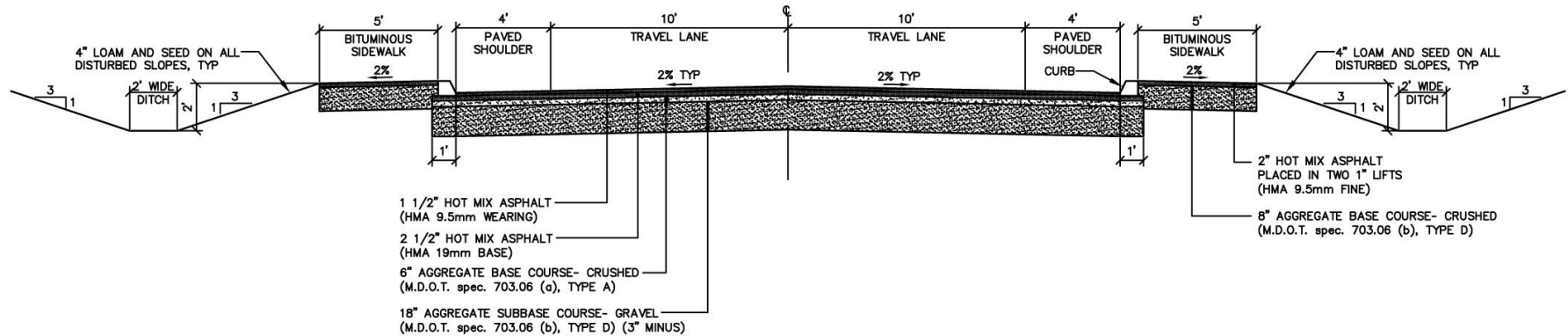
PROJECT NO: 16240

SCALE: 1" = 200'

SHEET 1 OF 4

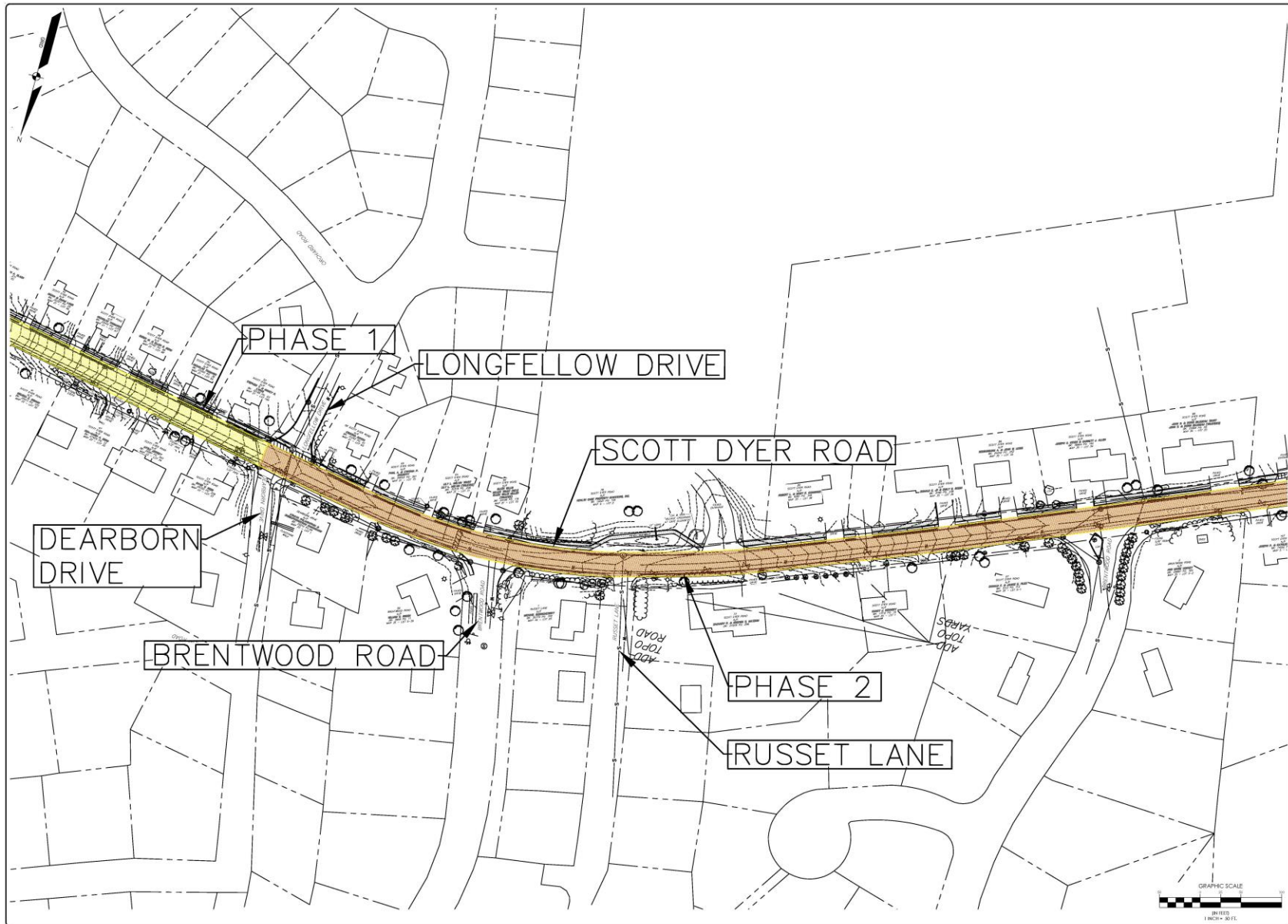






**TYPICAL ROAD SECTION - HILL WAY**

SCALE: 1"=4'



PLS OR PE  
PROGRESS  
PRINT

PLS OR PE

NOT FOR CONSTRUCTION

[illegible]

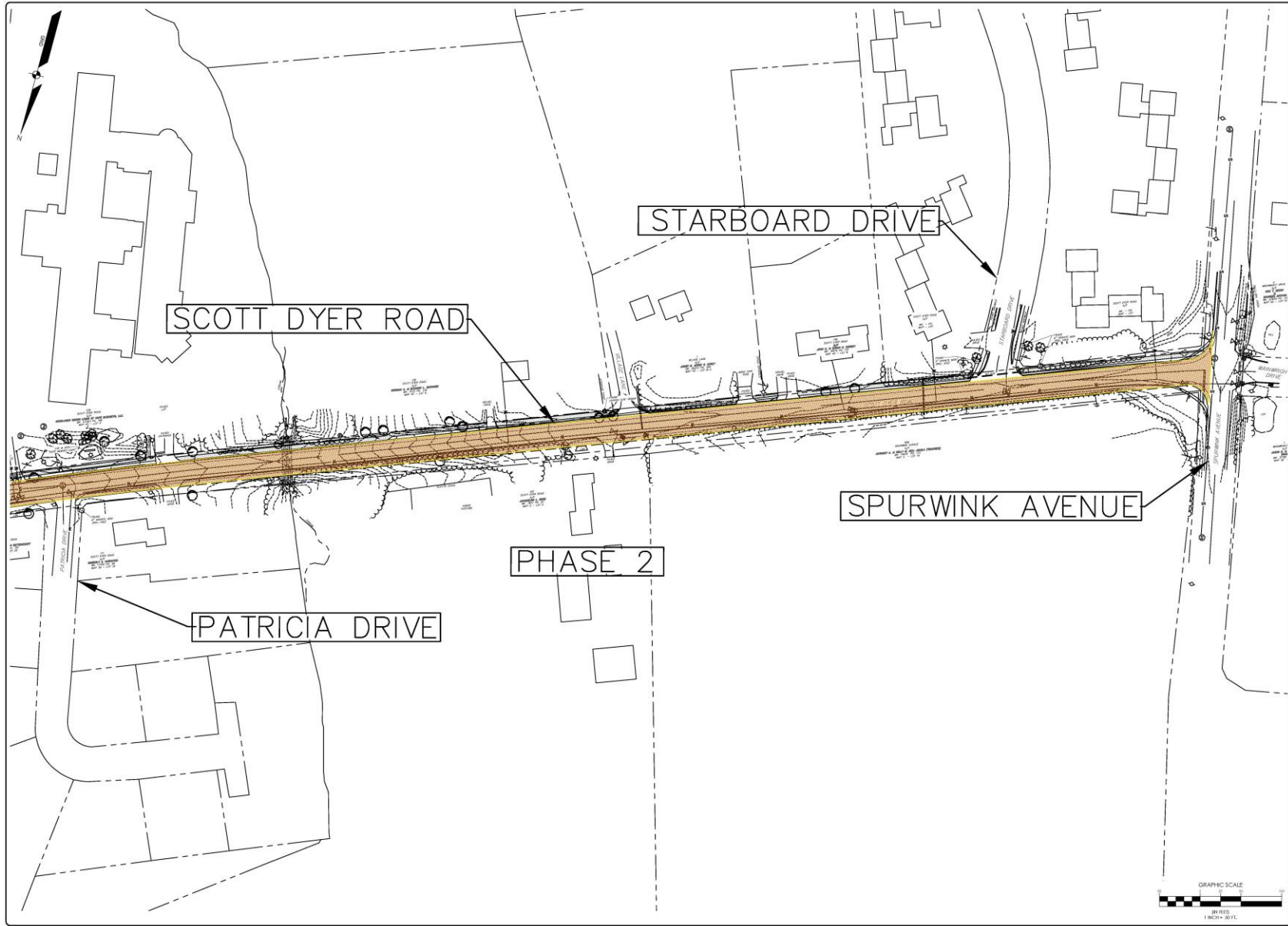
**SEBAGO**  
TECHNICS

[WWW.SEBAGOTECHNICS.COM](http://WWW.SEBAGOTECHNICS.COM)

775 John Brown Rd.  
Suite 101  
South Portland, ME 04108  
Tel. 207-200-2100  
Fax 207-200-2100

250 Cordisland Rd.  
Suite #  
Lewiston, ME 04240  
Tel. 207-783-5858

**SITE PLAN RENDERING**  
**OF**  
**SCOTT DYER ROAD IMPROVEMENTS**  
 SCOTT DYER ROAD  
 TOWN OF ELIZABETH, MAINE  
 FOR:  
 TOWN OF CAPE ELIZABETH  
 COOPER DRIVE  
 CAPE, ELIZABETH, MAINE



PLS OR PE

PROGRESS PRINT

DESIGNED BY: [ ]

CHECKED BY: [ ]

DES BY: [ ]

CHK BY: [ ]

REV BY: [ ]

DATE: [ ]

REV BY: [ ]

DATE: [ ]

STATUS: [ ]

THIS PLAN SHALL NOT BE MODIFIED WITHOUT PERMISSION FROM SEBAGO TECHNICS, INC. ANY ALTERATIONS SHALL BE INDICATED BY A RED LINE OR A RED CIRCLE WITH A RED 'X' IN THE CENTER. ANY CHANGES SHALL BE INDICATED BY A RED LINE OR A RED CIRCLE WITH A RED 'X' IN THE CENTER.

**SEBAGO**

WWW.SEAGOTECHNICS.COM

75 Jolly Rogers Rd. 200 Seaboard Rd.  
South Portland, ME 04106 Lewiston, ME 04240  
ME 207-255-2500 ME 207-255-2500

**SITE PLAN RENDERING**

**SCOTT DYER ROAD IMPROVEMENTS**

CAPE ELIZABETH, MAINE

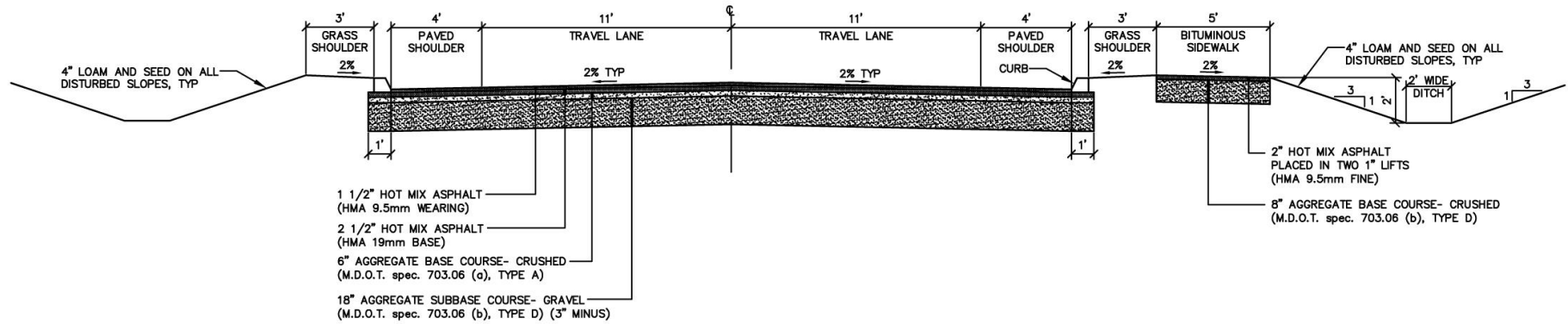
TOWN OF CAPE ELIZABETH

COOPER DRIVE, MAINE

PROJECT NO. 16240

SCALE 1" = 200'

SHEET 4 OF 4



**TYPICAL ROAD SECTION - SCOTT DYER ROAD**

SCALE: 1"=4'





# Construction Schedule

- 2017: Phases 1 & 2 - Construction Documents
- 2017 - 2018: Bid/Construct Phase 1 - Hill Way and Scott Dyer to Longfellow Drive
- 2018: No Significant Project Activity
- 2019: Bid/Construct Phase 2 - Scott Dyer Road from Longfellow Dr. to Spurwink Ave.
- 2019 or 2020: Scott Dyer Road MDOT/PACTS Overlay Surface Paving